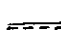



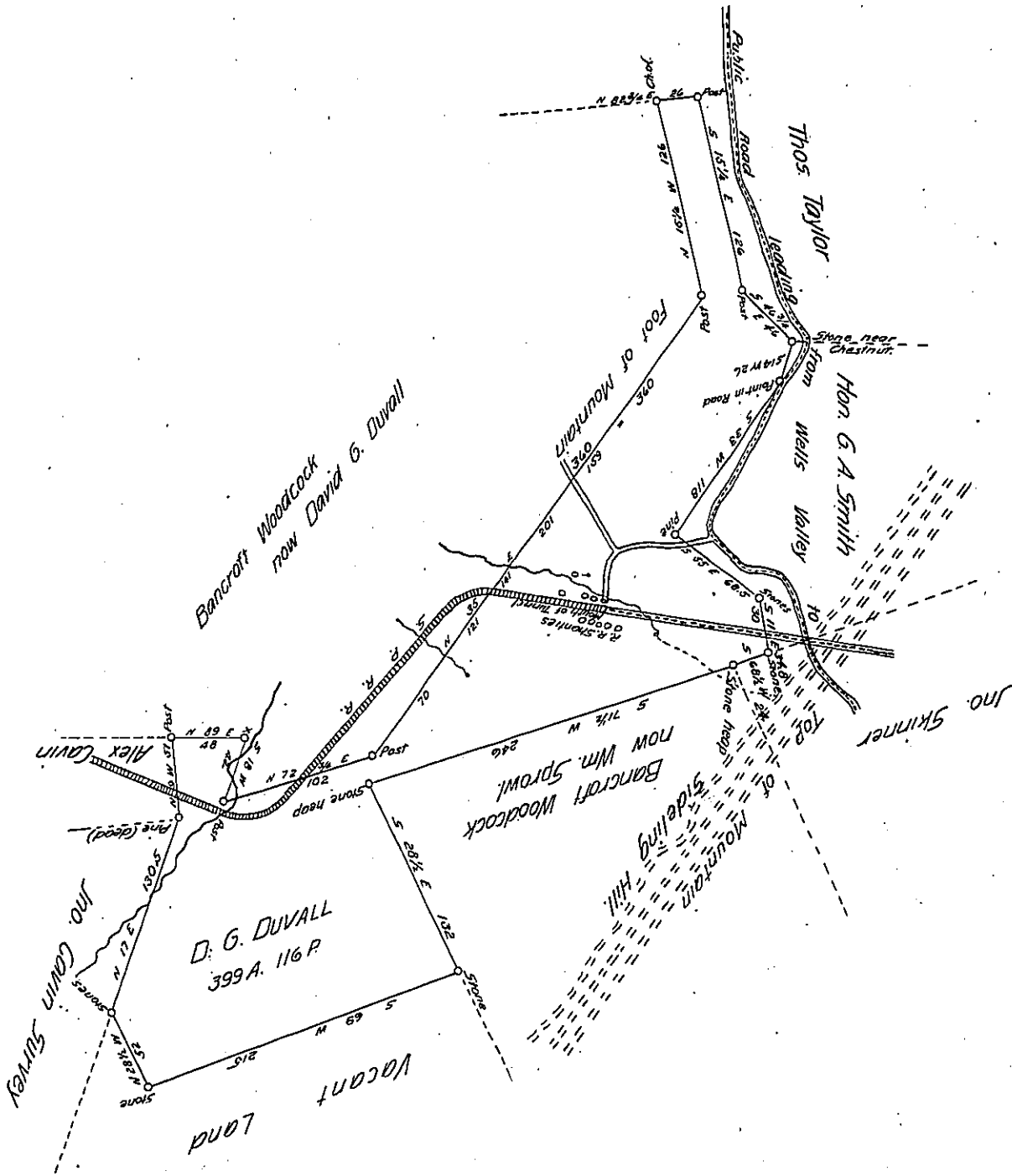


Scale 80 Per to the Inch.

-  R. R. Tunnel
-  Line of S. Penn'a. R. R.
-  Public Roads
-  Private Roads.



A draft of a tract of land situated (on the west side of Sideling hill Mt) in Wells Township Fulton County Containing 399 Acres 116 Perches and allowance of six per cent for roads &c. Surveyed the 13<sup>th</sup> and 14<sup>th</sup> day of May 1884. in pursuance of a Warrant granted to David G. Duvall dated the 4<sup>th</sup> day January A.D. 1884.

Jonas Lake C. S.

To J. Simpson Africa Secretary of Internal Affairs.

IN TESTIMONY that the above is a copy of the original remaining on file in the Department of Internal Affairs of Pennsylvania, made conformably to an Act of Assembly approved the 16th day of February, 1833, I have hereunto set my Hand and caused the Seal of said Department to be affixed at Harrisburg, this

twenty fifth day of January 1906.

*Lo. A. C. P. Pearson*  
Secretary of Internal Affairs.